



Focus Group Meeting: Biodiversity Kumtor Biodiversity Strategy & Plan Bishkek, 19 Oct 2012

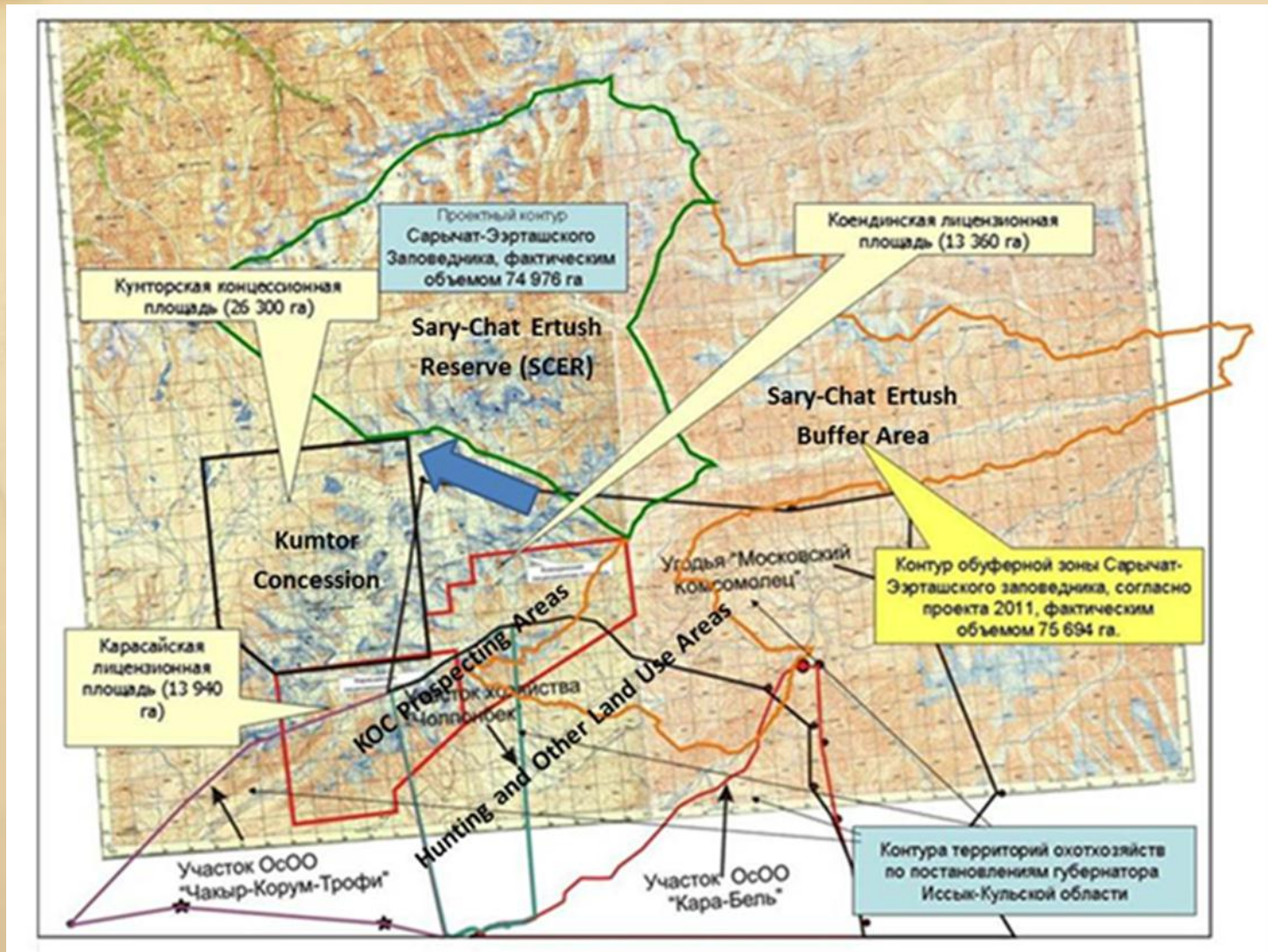
Mehrdad Nazari, MSc, MBA, LEAD Fellow, ESIA & CSR Advisor,
Director, Prizma LLC

Dr. Don Proebstel, Conservation Biologist, Senior ESIA &
Biodiversity Advisor, Prizma LLC

About Prizma

- ESIA & CSR Advisory Practice
 - Dr. Don Proebstel, Senior ESIA & Biodiversity Advisor, Prizma LLC - Conservation Biologist, previously with OPIC, VP Env. & Sustainability at Gold Reserve, Inc., AATA International, Director of Salmonid Research Institute
 - Mehrdad Nazari, MBA, MSc, LEAD Fellow, Senior ESIA & CSR Advisor, Director of Prizma LLC; previously with CoreRatings (advising SRI investors), Principal Env. Specialist, EBRD; Project Manager, Dames & Moore,
- Prizma conducted Independent Assessments of the Interagency and Parliamentary Commissions

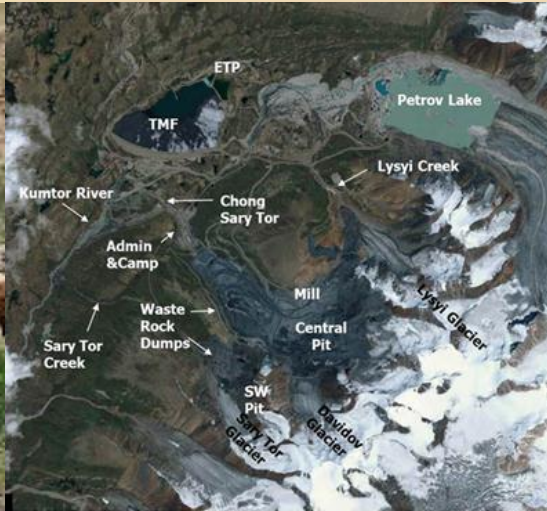
Co-existence, Shared Goals - Complexities



Shared Biodiversity – Risks & Opportunities



Need System Thinking & Solutions



Hunt Marco Polo Sheep

Kyrgyz Republic (Kyrgyzstan)

(*ovis ammon poli*)

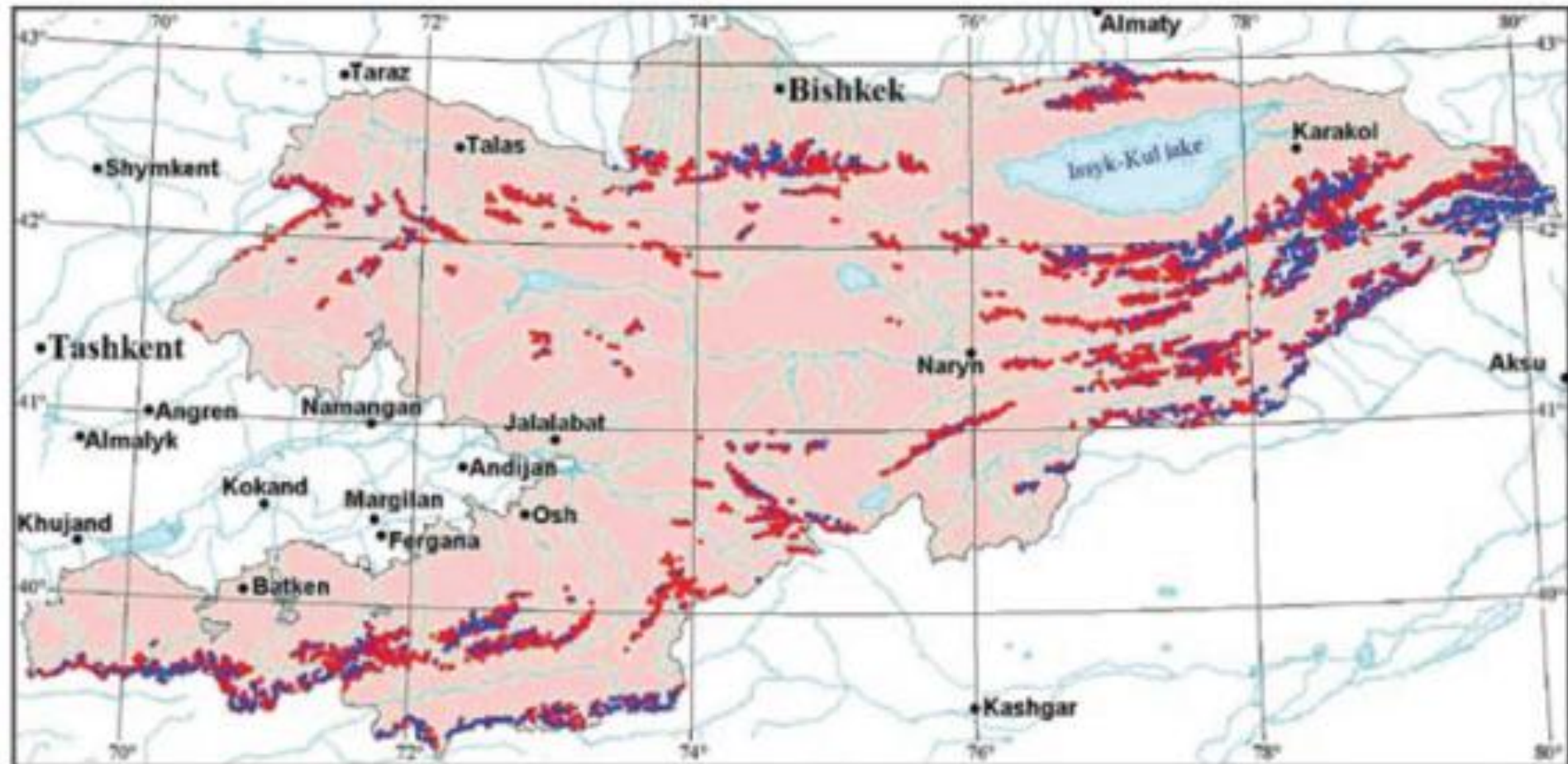
Marco Polo is in CITES II

Price Marco Polo Only: \$22,700

Combo Marco Polo/Tbex: \$29,700



Climate Change: Long Term Challenge



Predicted state of glaciation in 2025 in the Kyrgyz Republic due to Climate Change impacts compared to glacier catalogue developed in the 1960s (extinct glaciers marked with red, extant glaciers marked with blue) – in KR's 2nd submission to UNFCCC (2009)

Emerging Kumtor's Biodiversity Management Strategy and Plan

- Further integrate biodiversity conservation into environmental and closure planning
- Seek net-positive biodiversity outcomes
- Facilitate cooperation & communication with conservation partners and stakeholders

Generic Mine Life Cycle

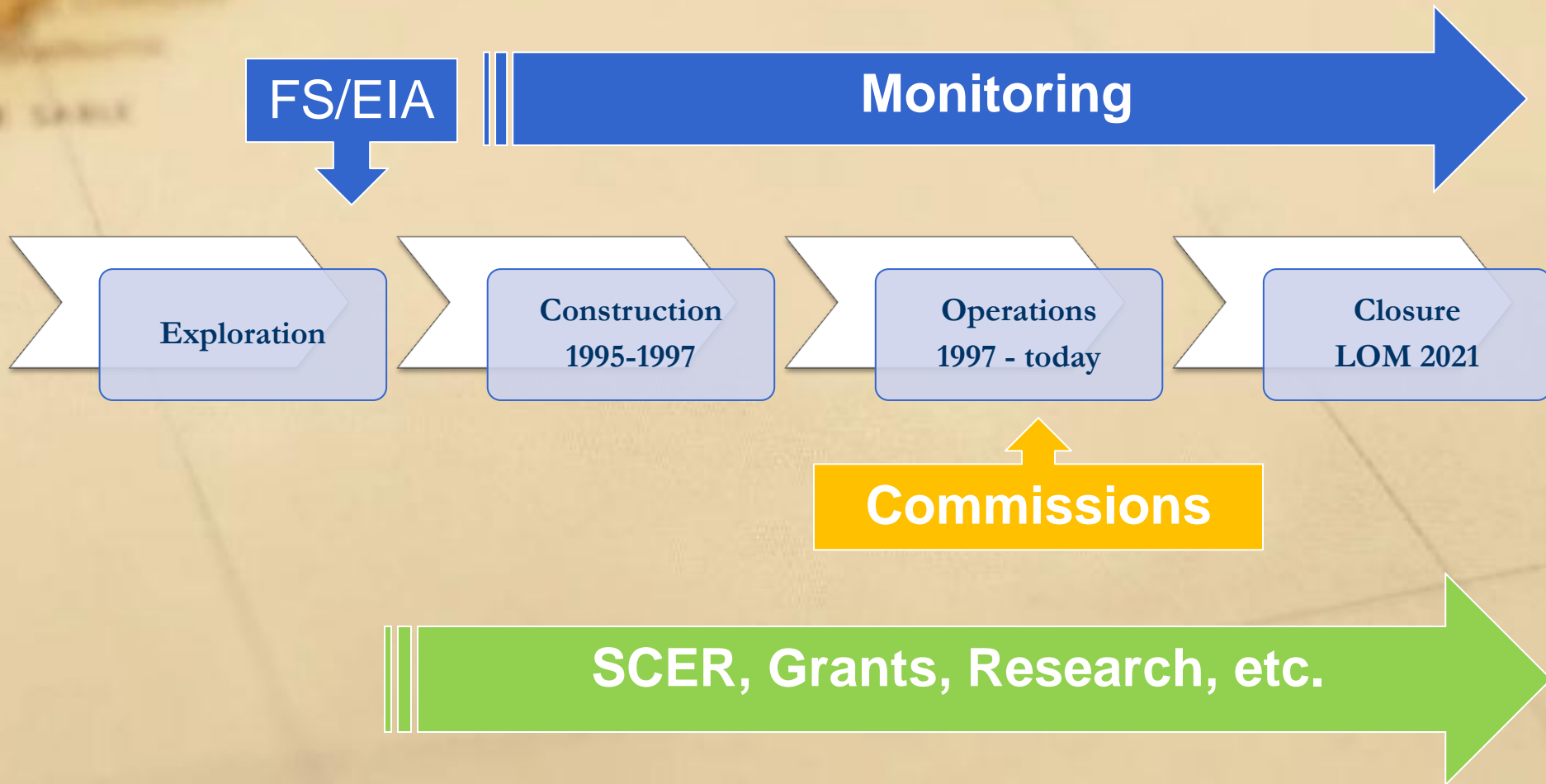
Exploration

Construction

Operations

Closure

Kumtor Life Cycle & Biodiversity Monitoring



Orientation of Kumtor's Strategy?



Expand 'Classic' Mitigation Hierarchy?

